

C is for Custom

American Custom Technologies is a custom-contract manufacturer. We create custom patches to your specifications!

OTC drugs

- Lidocaine
- Menthol
- Methyl Salicylate
- Capsaicin
- Salicylic Acid
- Hydrocortisone

Herb
Vitamin
Nutraceutical

And more...

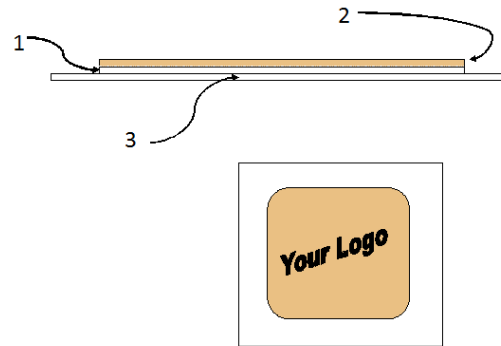
Custom size
Custom shape
Custom formulation services

ACT is all about YOU!

Monolithic Patches

A monolithic patch is a patch in which the active ingredients are mixed into the matrix of the adhesive.

This allows you to have a flat patch. Perfect for displaying your brand, the monolithic patch lasts up to 36 hours.

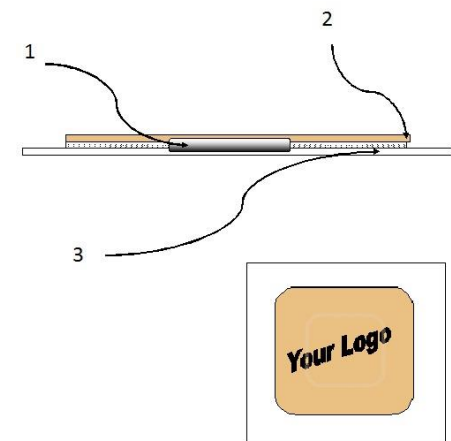


- 1 – The active ingredients incorporated into medical grade adhesive.
- 2 – Patch material
- 3 – The liner

Pad (or Reservoir) Patches

A pad patch is a patch in which the active ingredient is contained in a non-woven pad that is separate from the adhesive layer.

Pad patches dispense more active ingredients than monolithic patches and do so for a longer period of time. They can be printed with a one-color design if desired.



- 1 - The active ingredients coated onto an absorbent pad.
- 2 - The patch material, with hypoallergenic adhesive.
- 3 - The liner

Have more questions?



How do patches work?

Patches have an occlusive layer that helps the skin open up and absorb the active ingredients.

This non-invasive delivery is painless to apply, and works with your skin's natural absorption rate.

We'd love to answer them!

Find us on the web:
americancustomtech.com

Contact us by email:
Sales@americancustomtech.com

Contact us directly:
(760) 724-1205 Phone
(760) 724 9413 Fax

American Custom Technologies
2625 Temple Heights Dr. Ste. C
Oceanside, CA 92056

Topical
and
Transdermal
Patches